

### GARDEN & INDOORS



#### WHITE TAIL

Bites by this spider are relatively frequent due to its wandering habit. Symptoms range from no reaction to swelling and local blistering at the bite site and nausea. Seek medical attention if bitten.



#### WOLF

Not considered dangerous however bite is painful. Symptoms can include local pain and itchiness.



#### HUNTSMAN

Not dangerous, are often found indoors where they search for insects.



#### GARDEN ORB WEAVING

Not dangerous, found in large web in between trees/shrubs.

### GROUND DWELLERS



#### SYDNEY FUNNEL WEB

Very dangerous spider. Aggressive and often found wandering after wet weather. If bitten, apply pressure immobilisation bandage immediately & call 000.



#### TRAPDOOR

Not dangerous however are large and the bite may be painful.



#### MOUSE SPIDER

Dangerous spider, smaller than a funnel web but has strong fangs. Painful bite. If bitten, apply pressure immobilisation bandage immediately & call 000.

### GENERAL SAFETY INFORMATION FOR ALL SPIDERS

- Do not leave clothes, shoes, towels etc on the floor.
- Check shoes before putting them on.
- Do not walk about at night without footwear.
- Do not handle spiders that appear to have drowned in pools, buckets etc.
- \* Wear leather gloves when gardening or working outside.
- \* If bitten by a spider, seek medical advice as soon as possible.

### WEB SPINNERS



#### REDBACK

Dangerous spider. Found in disorganised web under loose materials. If bitten apply ice pack and seek urgent medical attention.



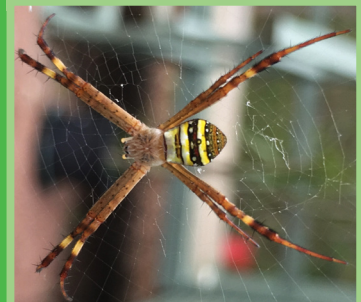
#### BLACK HOUSE

Common non-dangerous spider that has painful bite. Found in webs around eaves, doors & windows.



#### GOLDEN ORB WEAVING

Not dangerous, found in webs in gardens



#### ST ANDREWS CROSS

Not dangerous, web and legs make cross pattern.

# Brief information on Australian Spiders

\* IMAGES NOT TO SCALE



## Sydney Funnel Web Spider

(*Atrax robustus*)

The male has slender legs and a spur located on the third segment of the second leg. The head region is glossy black while the abdomen is dark brown or purplish in colour. Funnel-web spiders prefer sheltered, shady spots which are always cool and humid. Burrows are often beneath rocks and logs and may reach 600mm in length. **First Aid: Apply pressure immobilisation bandage immediately & call 000**



## Red Back Spider

(*Latrodectus hasselti*)

The female red back is black with a distinctive red or orange marking on its back, although this may sometimes be absent. The female is the only one capable of harming humans as the males fangs are incapable of penetrating human skin. Red backs are commonly found in logs or under rocks in the bush as they tend to reside in dark dry areas. It is also known to live under roof eaves, shelves, and flower pots or in garden sheds.

**First Aid: Ice pack and straight to hospital.**



## Mouse Spider

(*Missulena occatoria*)

Has a squat shape and huge fang sheaths at the front of the head area. Most species are dark brown or black in colour, although the male mouse spider has a bright reddish-brown front part of the head. The body size reaches around 35mm with the male being distinctly smaller and less robust. They live in oval burrows up to a metre in length, often constructed in the banks of water courses. Heavy rain often forces them out of their burrows and this is when they may be encountered.

**First Aid: Apply pressure immobilisation bandage immediately & call 000**



## White Tail Spider

(*Lampona cylindrata*)

The white-tailed spider has a long cigar shaped dark grey abdomen with a creamy-white speck on the tip. The legs usually have a brownish hue. A large female may reach up to 20mm in body length, males around 12mm. White-tailed spiders are found in cool dark areas such as under bark, leaf litter, etc. They wander great distances looking for prey.

**First Aid: Ice pack and seek medical attention**



## Trapdoor Spider

(*Misgolas rapax*)

Often mistaken for a funnel web. If bitten and not sure what spider it is, treat as a funnel web. Chocolate brown coloration, less robust body and the presence of distinct boxing glove shaped palps in the males. The body and legs are covered in tiny hairs. The female is around 35mm in length, while the male is around 20mm and of a slimmer build. They are usually shy and retiring, although occasionally will stand up and present its fangs if harassed. They dig a burrow in the ground that is lined with silk, and despite their common name this species does not construct a lid. **First Aid: Apply pressure immobilisation bandage immediately & seek medical attention**



## Huntsman Spider

(*Delena, Holconia, Neosparassus*)

Huntsman spiders have flat bodies and are extremely fast intruders. Occasionally they take up residence in kitchens and living rooms. The two back pairs of legs are shorter than the ones at the front and the legs fan out sideways enabling them to walk forwards and sideways just like a crab. Usually found on tree trunks, under bark, beneath stones or on walls.

**First Aid: Ice pack and seek medical attention**

## FUNNEL WEB SPIDER DROP OFF POINTS

The Australian Reptile Park relies on the public to bring in funnel web spiders for their life-saving antivenom program. There are many locations around the Central Coast, Sydney and Newcastle that act as drop off points for the Reptile Park. They include:

Region	Collection Point	Area	Hours
Newcastle	John Hunter Hospital Lookout Road New Lambton Heights	Pathology Level 2	Weekdays only 8-5pm

Central Coast			
Gosford	Gosford Hospital Racecourse Road, Gosford	Pathology	Mon-Fri 9-5pm Sat/Sun 9-3pm
Gosford	Vital First Aid 30 Glennie Street, Gosford	Front Desk	Mon-Fri 9:30 - 4pm
Wyoming	Wyoming Veterinary Hospital 24 Cary Street, Wyoming	Vet Rooms	24hrs 7 Days
Wyong	Wyong Hospital Pacific Highway Wyong	Emergency	24hrs 7 Days

Sydney			
Brookvale	Greencross Vets (inside Pet Barn) 60 Winbourne Road, Brookvale	Reception	Mon-Wed/ Fri 8:30-7pm Thu 8:30-8pm Sat 9-3pm Sun 9-12pm
Caringbah	Sutherland Hospital The Kingsway Caringbah	Emergency	24hrs 7 Days
Hornsby	Hornsby Hospital Palmerston Rd Hornsby	Reception & Emergency	24hrs 7 Days
Monavale	Mona Vale Veterinary Hospital 22 Park St Monavale	Reception	Mon-Fri 8:30-7pm Sat 8-12pm
Westmead	Westmead Public Hospital Cnr Hawkesbury Rd & Darcy Rd, Westmead	Entomology Department	Mon-Fri 9-5pm
Windsor	Hawkesbury City Council Hospital George St Windsor	Customer Service Desk	Mon-Fri 8.30-5pm

## How To Catch A Funnel Web Spider

Go to [www.reptilepark.com.au](http://www.reptilepark.com.au) to see an instructional video on how to safely catch a Funnel Web Spider.



Pacific Highway, Somersby  
(Gosford Exit off M1)  
Ph: (02) 4340 1022  
Email: [admin@reptilepark.com.au](mailto:admin@reptilepark.com.au)  
[www.reptilepark.com.au](http://www.reptilepark.com.au)